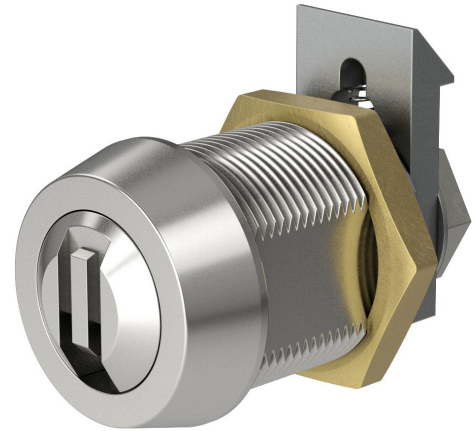




# CHIP TRAY SLAM LOCK

**UNIQUE PUSH-TO-LOCK HARDWARE FOR  
TABLE GAMING.**



## OVERVIEW

### Close all your tables in seconds

The high security Chip Tray Slam Lock allows any employee to instantly secure the tray, no key required. When the lid is closed, the spring-loaded latching cam locks into place. The Chip Tray Slam Lock is available for both single and dual locking float lids.

### Product features

- o Push-to-lock any chip tray
- o Robust manipulation prevention
- o Removable core
- o Master keying option to six levels
- o Registered keys only available from Camlock Systems

# SMARTER LOCKING

## TECHNICAL DATA

Number of key differs	16.7 million
Protective features	False gates, blocking bar, removable faceplate
Mechanism	Dual sidebar
Removable core	Yes
Body material	Brass
Finish	Chrome
Key registration	Yes
Cross suiting	Yes
Master keying	Yes - up to six levels
Key suite options	Keyed alike and keyed to differ
Body length	5/8", 7/8", 11/8"
Fixing hole dimensions	Standard 19mm x 16mm 'double D' punch
Lock fixing	Brass body nut (supplied)
Key operations	Key retaining and non-key retaining choices
MACS	None