



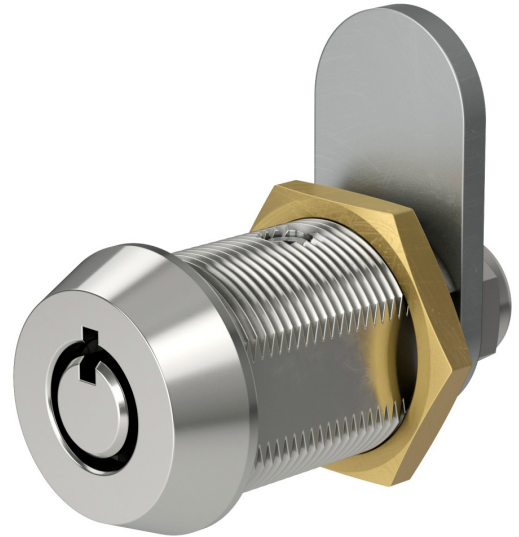
CAMLOCK
SYSTEMS

PRODUCT SPECIFICATION

Series 5 Cam Lock

SERIES 5

**BRASS CAM LOCK WITH
MASTER KEYING. RADIAL
PIN TUMBLER MECHANISM.**



OVERVIEW

Master-key cam lock with medium security.

The Series 5 is an all brass Cam Lock housing our seven pin, Radial Pin Tumbler mechanism with the additional functionality of master keying. Available in 25 and 30mm body lengths. A wide range of compatible cams are available to order in addition.

Product features

- o Solid brass construction
- o Contains our Series 2, radial pin tumbler mechanism
- o Offers medium physical protection
- o Keyed to differ locks are supplied with two keys per lock
- o Compatible cams and accessories available to order

TECHNICAL DATA

Number of key differs	500,000
Mechanism	Seven pin, Radial Pin Tumbler
Body material	Brass
Finish	Polished chrome
Patent protection	No
Key registration	Yes - optional
Masterkeying	Yes
Key suite options	Keyed alike and keyed to differ
Body length	25mm and 30mm
Fixing hole dimensions	Standard 19mm x 16mm 'double D' punch
Lock fixing	Brass body nut (supplied)
Key operations	Three key movements: 90° and 180°

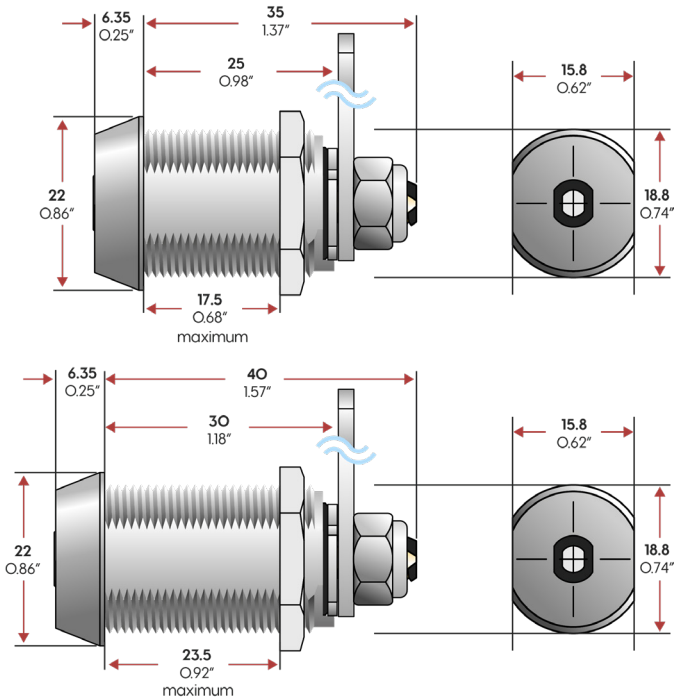
**SMARTER
LOCKING**



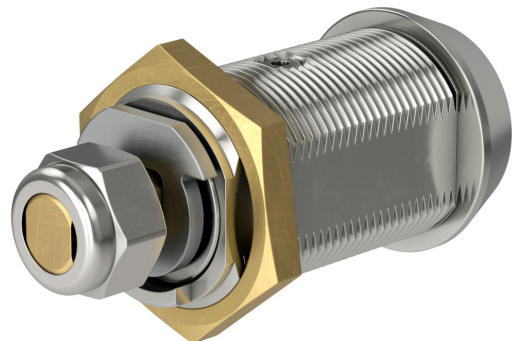
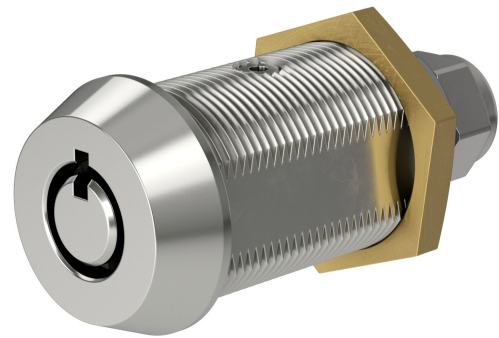
TECHNICAL DRAWINGS

ADDITIONAL PRODUCT IMAGES

25mm



30mm

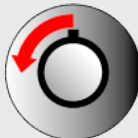


KEY OPERATIONS



Key movement: 1

Key starting position: 12 o'clock
 Key rotation: 90°
 Key ending position: 3 o'clock
 Key when unlocked: Trapped



Key movement: 2

Key starting position: 12 o'clock
 Key rotation: 90°
 Key ending position: 9 o'clock
 Key when unlocked: Trapped



Key movement: 3

Key starting position: 12 o'clock
 Key rotation: 180°
 Key ending position: 6 o'clock
 Key when unlocked: Trapped