



**CAMLOCK**  
SYSTEMS

**PRODUCT SPECIFICATION**

Series 2M Locking Insert

# SERIES 2M

**SHORT-LENGTH LOCKING INSERT  
CONTAINING OUR SERIES 2,  
RADIAL PIN MECHANISM.**



## OVERVIEW

**Short Locking Insert for compact hardware.**

Designed specifically for compact, slimline T-handles, like our Series 8840, the Series 2M offers the benefits of our Series 2 Radial Pin mechanism in a compact body.

Available in standard length Locking Insert.

### Product features

- o Seven pin, Radial Pin Tumbler mechanism
- o NAMA compliant
- o Compatible with our range of compact T-handles
- o Available with a standard latch, flush latch or deadbolt

## TECHNICAL DATA

Number of key differs	500,000
Mechanism	Radial pin tumbler
Body material	Zinc alloy
Finish	Polished chrome
Patent protection	No
Key registration	No
Master keying	No
Key suite options	Keyed alike and keyed to differ
Body length	38mm
Insert diameter	18mm

**SMARTER  
LOCKING**

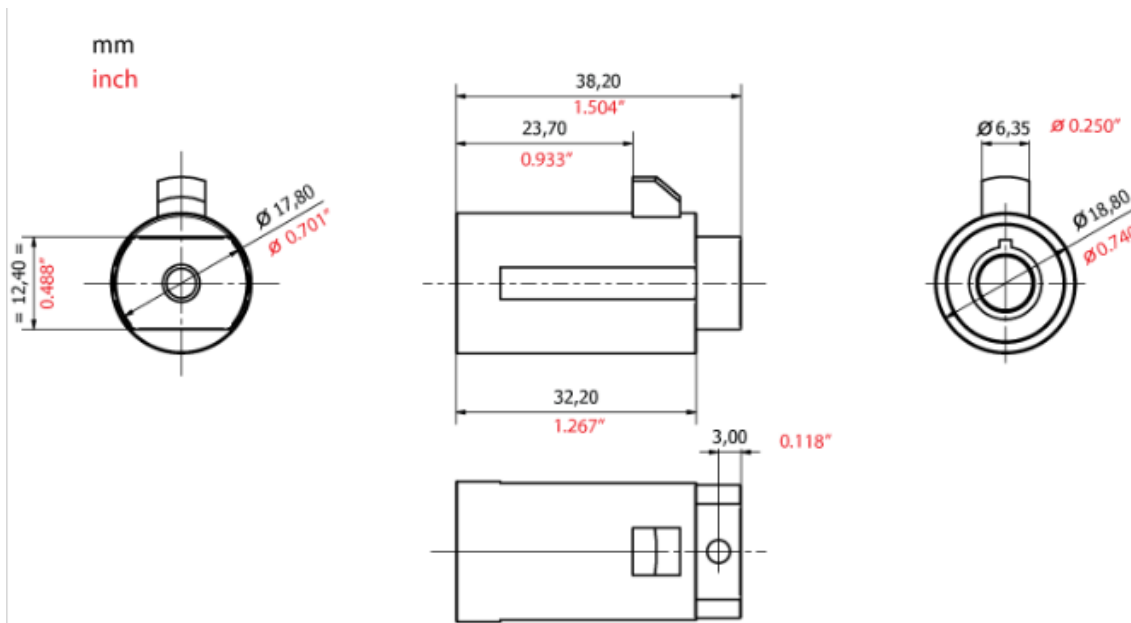


**CAMLOCK**  
SYSTEMS

**PRODUCT SPECIFICATION**

Series 2M Locking Insert

**TECHNICAL DRAWINGS**



**ADDITIONAL PRODUCT IMAGES**

