



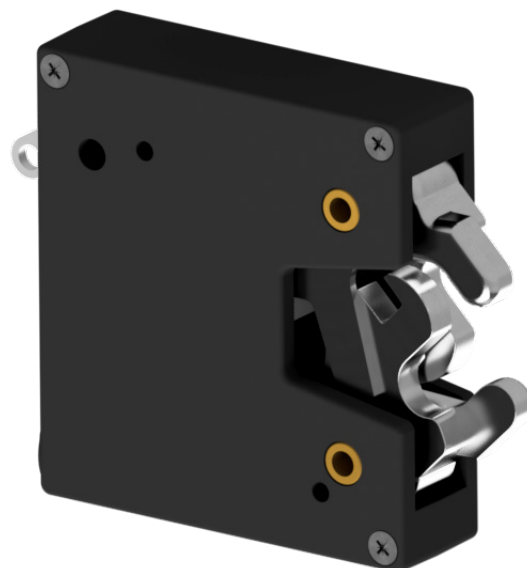
CAMLOCK
SYSTEMS

PRODUCT SPECIFICATION

Series 100

SERIES 100

ELECTRONIC ROTARY LATCH



OVERVIEW

The Series 100 is a high-security latch ideal for heavy usage. This unique rotary latch offers a tamper-resistant, electronic locking solution. With its patented design, the dual locking jaws utilise the compression strength of steel to prevent forced unlocking.

The Series 100 MK2 offers the same strength with additional features such as built in door monitoring and improved latch monitoring. The Series 100 MK2 now utilises micro switches for more accuracy and reliability.

TECHNICAL DATA

Monitoring	Built-in monitoring switch indicating if latch is blocked or unlocked. Built-in door monitoring
Power requirements	150mA @ 5V to 24V DC
Sprung door opening	Standard or light opening force available
Materials	Glass-reinforced flame-resistant plastic housing. Stainless steel jaws
Finish	Smooth black finish
Mechanical override	Yes, fitted override lever
Patented	Patented
CE/UKCA tested	Yes
IP rating	IP55
Cycle testing	100,000+ cycles
Forced opening	Withstands 3,000N of force
Contact rating	Door position: Open-drain MOSFET, max 300mA load Locking bar position: Open-drain MOSFET, max 300mA load Combined monitor: Open-drain MOSFET, max 300mA load
Operating temperatures	-40°C to +65°C
Maximum pre-load on latch	300N
Fixing	2x 5mm fixings or optional threaded bushes

**SMARTER
LOCKING**