

The gaming industry covers a wide range of activities, from arcade games, and slot machines to roulette and electronic table machines in casinos. Operators need security options that cover the whole spectrum. Implementing electronic locking systems within these industries helps safeguard valuable assets in an industry where security is critical. Camlock Systems has developed a range of products to suit the amusements and gaming industries, including mechanical and electronic locks and access control systems. We can offer standalone products or complete systems depending on requirements.

SERIES 63

MANIPULATION-RESISTANT, BRASS LOCKING CAM LOCK WITH AXIAL PIN TUMBLER MECHANISM



The Series 63 is a medium strength locking insert, which houses our unique AXIAL Pin Tumbler mechanism in a high quality brass body with a satin chrome finish.

- Superior key control. Will cross-suite with Series 65
- Patented mechanism and keyway
- Unique flag-shaped pins
- No shear line = high bump resistance
- Registered keys exclusively available from Camlock Systems
- Compatible with any locking hardware product taking standard length inserts



Over 5.7 Million key differs



Medium manipulation resistance



Medium physical attack resistance



Keyed alike and keyed to differ



Patented Axial mechanism and keyway



Indoor and outdoor use

SERIES 65

HIGH SECURITY, MANIPULATION-RESISTANT, HARDENED STEEL CAM LOCK WITH AXIAL PIN TUMBLER MECHANISM



The Series 65 is a high strength locking insert, which houses our patented, manipulation resistant AXIAL Pin Tumbler mechanism in a resilient, hardened steel shell.

- Superior key control and cross-suited
- No shear line = high bump resistance
- Unique "flag-shaped" locking pins
- High physical attack resistance
- Registered key exclusively available from Camlock Systems
- Compatible with any locking hardware product taking standard length inserts



Over 5.7 Million key differs



High manipulation resistance



High physical attack resistance



Keyed alike and keyed to differ



Patented Axial mechanism and keyway



Indoor and outdoor use



CAMLOCK
SYSTEMS

CAMATIC
CHANGEABLE COMBINATION LOCKS

SERIES 4 MKIV

CAMATIC CAM LOCK EIGHT COMBINATION CHANGEABLE OCTAGON MECHANISM



The 'Camatic' is Camlock Systems unique, changeable combination system. In the event of the loss or theft of operating key(s), the lock combination can be altered by a turn of the Change Key.

- Eight pin Radial Pin Tumbler
- Changeable mechanism with eight combinations
- Exclusive Octagon technology
- Change indicators on the lock bezel
- Zinc alloy body, polished chrome finish
- Operator and change keys sold separately for optimal key control
- Key registration



500,000+
key differs



Medium
manipulation
resistance



Medium physical
attack resistance



Changeable
combination
(Camatic)



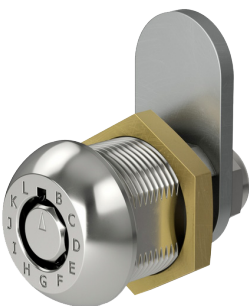
Unique
Octagon
mechanism



Indoor and
outdoor use

SERIES T48

CAMATIC CAMLOCK TWELVE COMBINATION CHANGEABLE OCTAGON MECHANISM



The 12 change 'Camatic' combination change system is combined with Camlock Systems 'Octagon' system to provide excellent pick resistance and minimize the risk of loss through theft using stolen or compromised keys.

- 12 pin Radial Pin Tumbler
- Changeable mechanism with twelve combinations
- High Security
- Exclusive Octagon technology
- Change indicators on the lock bezel
- Brass body with polished chrome finish
- Key registration



500,000+
key differs



High manipulation
resistance



Medium
physical attack
resistance



Changeable
combination
(Camatic)



Unique Octagon
mechanism



Indoor and
outdoor use

**SMARTER
LOCKING**

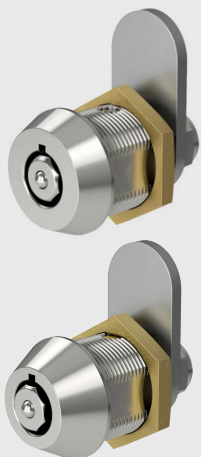


CAMLOCK SYSTEMS

LOCKING SOLUTIONS

SERIES 28 AND 58

SOLID BRASS CAM LOCK WITH SEVEN-PIN OCTAGON MECHANIS



The Series 28 and Series 58 include Camlock Systems Octagon mechanism - a high security seven-pin, Radial Pin Tumbler. Constructed in brass, it offers good security and key control in a range of four body lengths

- Seven-pin, Radial Pin Tumbler
- Exclusive Octagon mechanism
- Durable brass construction
- Anti-drill centre for added protection
- Seven key operations available
- Choice of five body lengths

The Series 58 offers all the features as the 28 with the addition of master keying.



500,000+
key differs



Medium
manipulation
resistance



Medium physical
attack resistance



Keyed alike and
keyed to differ



Unique
Octagon
mechanism



Indoor and
outdoor use

CAM LOCKS



SERIES 31
Double entry cam lock
with heavy duty keys



SERIES 9
Zinc alloy cam lock with 5
pin disk tumbler



SERIES 2
Solid brass cam lock
with Radial pin tumbler
mechanism



SERIES T
Solid brass Cam Lock with
a 10-pin RPT Mechanism

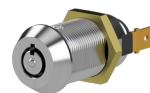


SERIES 415O
Zinc alloy, three-digit
combination Cam Lock

SWITCH LOCKS



SERIES 28
Single pole, extra security, 7
pin, solid brass Switchlock



SERIES 2D
Single pole, 7 pin,
die-cast switchlock

PUSH LOCKS



SERIES 25
Brass Push Lock with
our seven pin, Octagon
mechanism



SERIES C99OA
5 disc, flange fixing
pushlock, for sliding
wooden doors



SERIES G899O
Extra security, 7 pin, flange
fixing push lock for sliding
wooden doors



SERIES 3O
6 disc, double entry pushlock,
threaded body, nut or clip
fixing

MICRO LOCKS



SERIES 13D
Single pole, 7 pin,
die-cast switchlock



SERIES 21
8mm zinc alloy Cam
Lock. Five disc tumbler
mechanism

SMARTER LOCKING

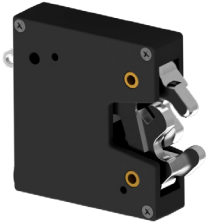


CAMLOCK SYSTEMS

ELECTRONIC LOCKING AND ACCESS CONTROL

SERIES 100

The Series 100 is a motorised rotary latch with a high-strength, tamper-resistant mechanism, providing strength and environmental resilience. The Series 100 MK2 offers additional features such as built in door monitoring, improved latch monitoring and utilises micro switches for more accuracy and reliability.



- Two symmetrical stainless steel jaws
- Lock status monitoring for added security
- IP65 Rated
- Operates in extreme temperatures (-40°C to +65°C)
- Low operating current
- Fitted with mechanical override
- Tested to 100,000+ usage cycles
- Rigorously tested to 7,000N of holding force and 300N of pre-load
- Integrates with CAMACTIVE access control system or existing systems

SERIES 400

The series 400 is a micro latching system available with either a rotary or slam latch. Its small size enables electronic locking in cabinets with spacial constraints.



- Two part, detachable lock and actuator
- Allows remote trigger via Bowden cable
- Easy-to-install. Universal fitting options
- Create multipoint locking by operating two latches via one actuator
- Lock and optional door monitoring
- Tested to 100,000+ usage cycles
- Tested to 2,800N of holding force
- Available as 90° rotary and slam version



CAMACTIVE

WIRELESS ACCESS CONTROL SYSTEM

CAMACTIVE wireless access control systems give the user control over who, when, where and for how long a machine is accessed. It is possible to grant or revoke permissions and provide one time access where required, negating the need for physical keys.

CAMACTIVE wireless access control system offers:

- Mobile based bluetooth control
- Dedicated app
- Control from one online portal
- Secure online access
- Data encryption
- Control of user permissions
- Limiting and scheduling access
- Customisable reports
- Works with all Camlock electronic latches and offers mechanical or electronic override

